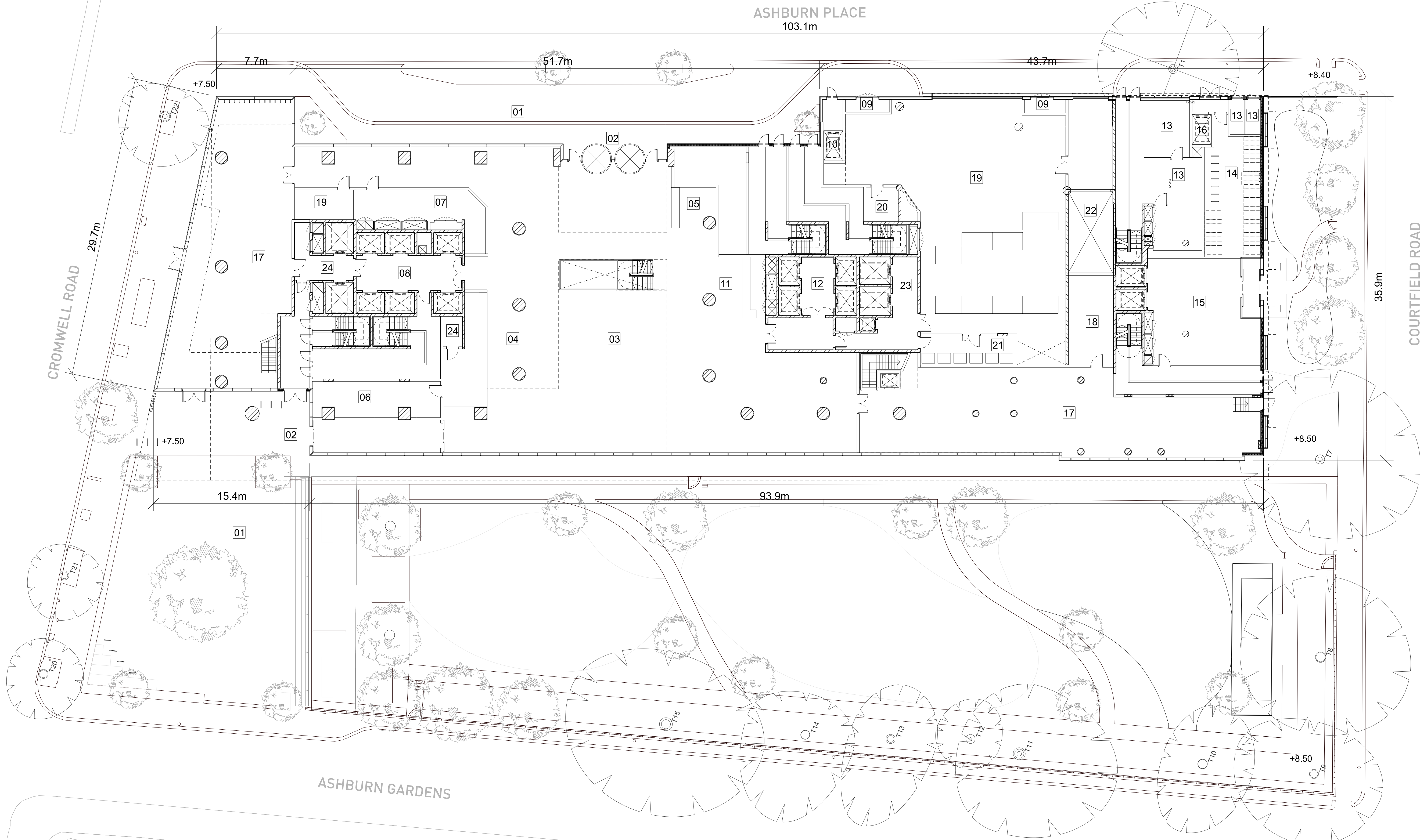


14

KEY

- 01 HOTEL DROP-OFF
- 02 HOTEL LOBBY ENTRANCE
- 03 HOTEL LOBBY
- 04 HOTEL MAIN RECEPTION
- 05 HOTEL CONFERENCE RECEPTION
- 06 HOTEL LUGGAGE STORE
- 07 HOTEL FOH OFFICE
- 08 HOTEL LIFT LOBBY/CORE
- 09 HOTEL/SERVICED APARTMENT METER ROOM
- 10 HOTEL/SERVICE APARTMENT CYCLE LIFT
- 11 SERVICED APARTMENT RECEPTION
- 12 SERVICED APARTMENT LIFT LOBBY

- 13 RESIDENTIAL PLANT/METER ROOM
- 14 RESIDENTIAL CYCLE STORE
- 15 RESIDENTIAL LOBBY
- 16 RESIDENTIAL CYCLE LIFT
- 17 RESTAURANT/BAR
- 18 WC
- 19 LOADING BAY
- 20 LOADING BAY OFFICE
- 21 BIN HOLDING AREA
- 22 CAR LIFT
- 23 SERVICE LIFT LOBBY
- 24 STORAGE

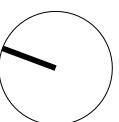


This drawing is copyright.  
Do not scale off dimensions.  
All dimensions to be checked on site by contractor.  
Contractor to report any dimensional discrepancies,  
errors or omissions prior to commencing on site.

2 0 2 4 6 8 10 12m

NOTE:

NORTH



Rev	Date	Description	Rev	Date	Description
-	15/05/2015	Full Planning Application			
A	11/01/2019	GLA Callin Amendments			

Project Title  
Kensington Forum Hotel  
Kensington, London

Status  
PLANNING

Drawing Title  
Level 00 Floor Plan

Job No	Scale	Date
10106	1:200(A0) NTS(A3)	JAN 2019
Drawing No	Revision	
10106-A-DRG-ZZ-G200-2000-PL	A	

**simpsonhaugh**

MANCHESTER  
Riverside, 4 Commercial St  
M2 7LW  
Tel: 0161 835 2340  
www.simpsonhaugh.com

LONDON  
2nd Roberts Place  
London EC1A 7BB  
Tel: 020 758 9800  
mail@simpsonhaugh.com